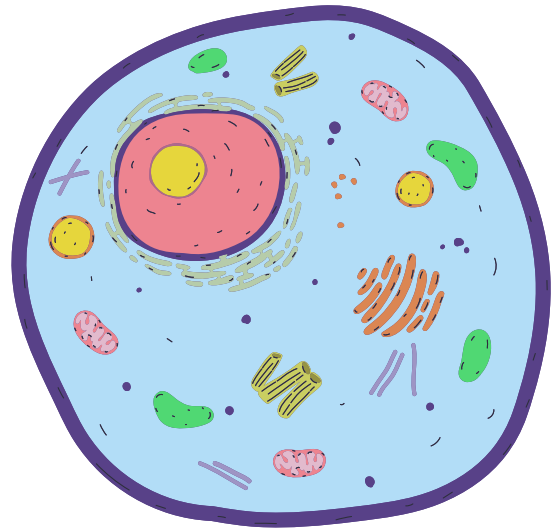


# INSIDE ANIMAL CELLS



Connect each cell structure to its corresponding accurate cell function by drawing a line.

MITOCHONDRIA

Controls what enters and leaves the cell.

RIBOSOME

Contains genetic material + controls cell activities.

NUCLEUS

Site of protein synthesis.

CELL MEMBRANE

Jelly-like substance that fills the cell.

CYTOPLASM

Produces energy through cellular respiration.

# THE ANSWER KEY

